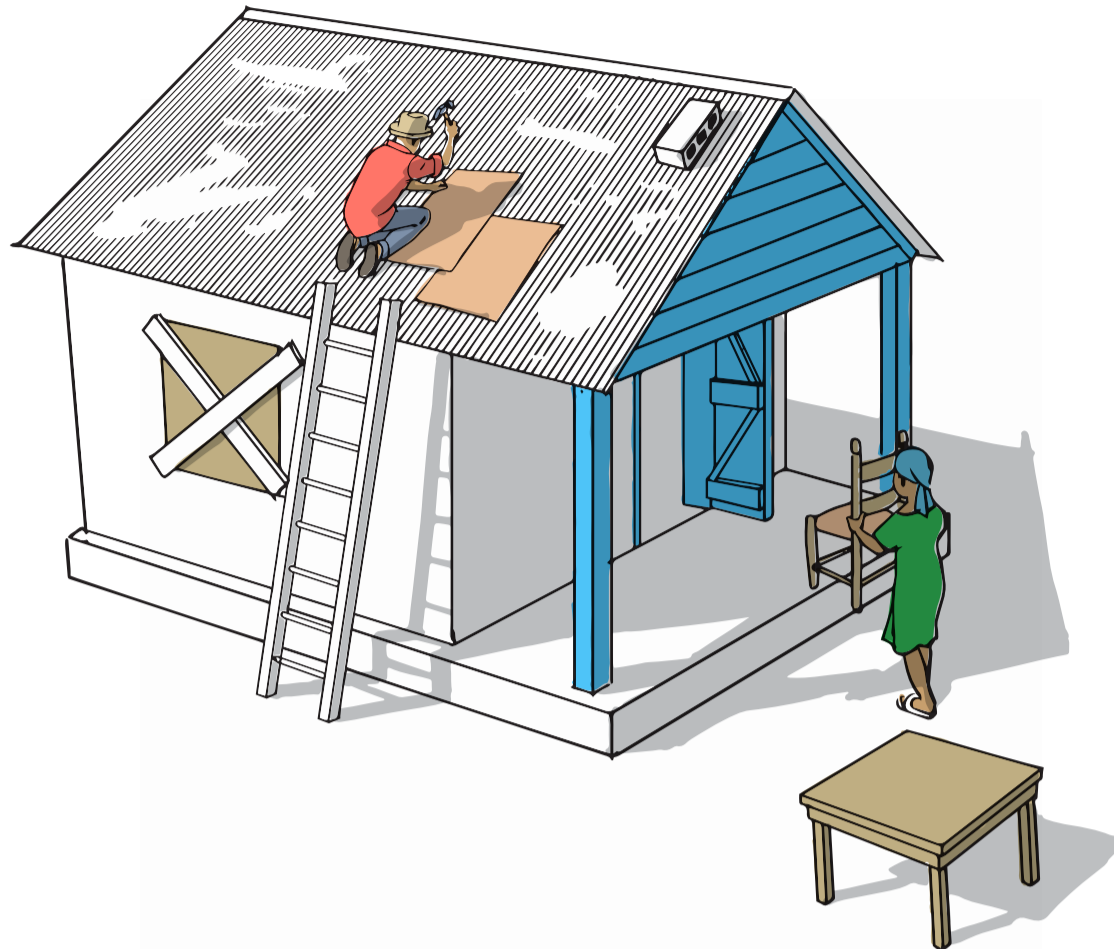


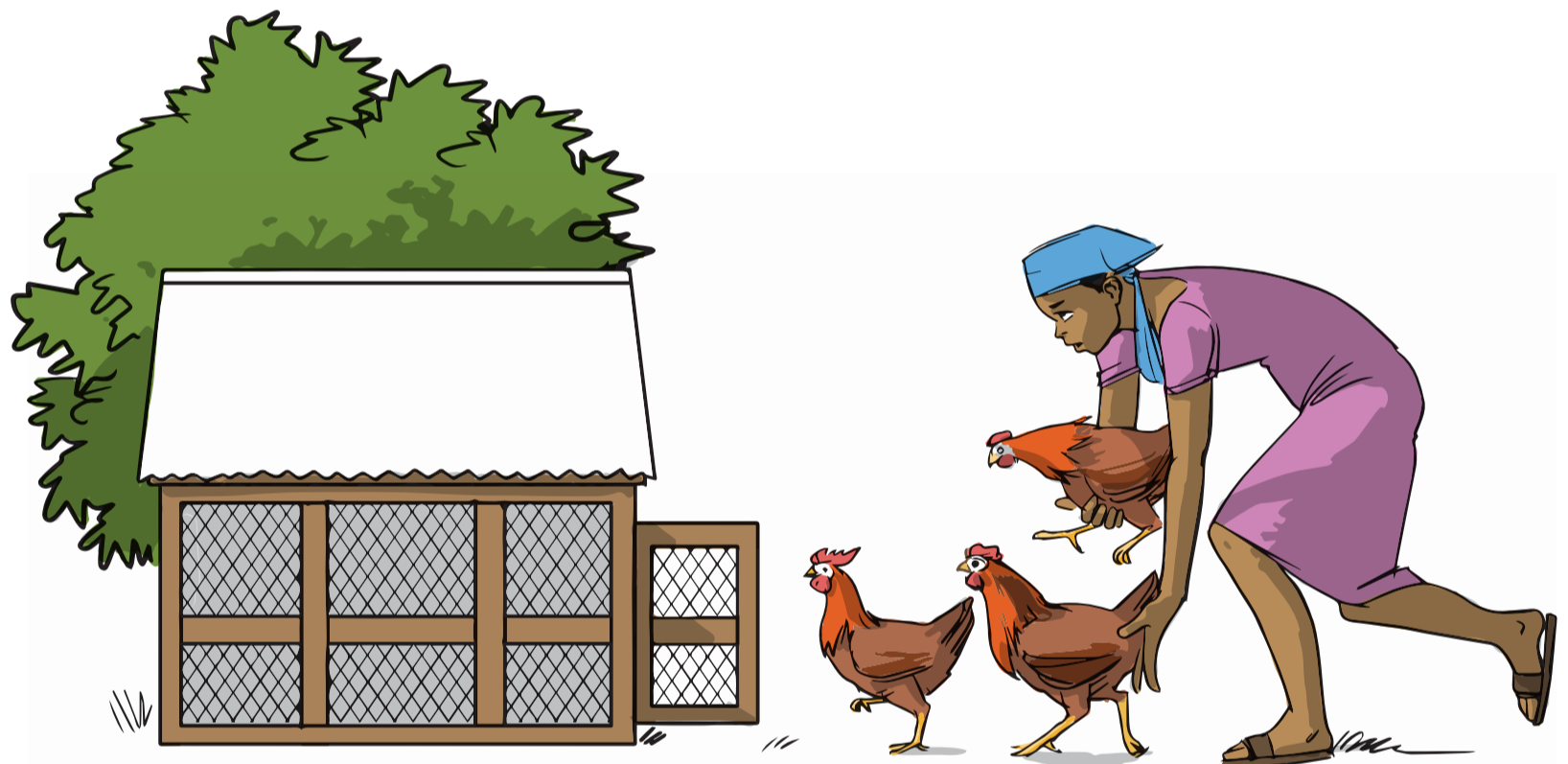
KISA NOU DWE FÈ LÈ GEN SIKLÒN?



1 Otorite yo anonse siklòn

2 Byen asire tèt kay yo, pòt yo ak fenèt yo pou van pa pote yo ale. Byen ranje tout bagay pou van pa pote yo ale.

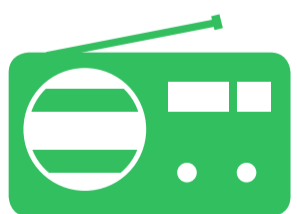
3 Debranche tout pye bwa ki prè kay nou
Pa sòti pandan gen siklòn



4 Tande konsiy brigadye pwoteksyon sivil, kwa wouj, eskout, majistra, kazek, azek, elatriye

4 Chache yon kote ki asire poun mete zannimo yo

Nenpòt jan sa ye, toujou koute konsèy otorite yo...



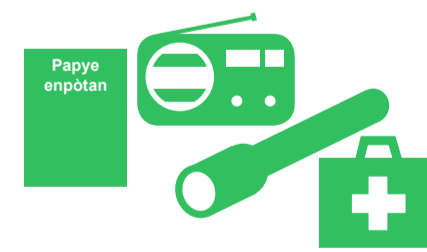
Koute Radyo
Pou nou konnen
kijan sityasyon-an
ap evolye



Kite zòn ki gen
danje-a



Pote kole youn ak lòt
Rele nan telefòn si
gen ijans



Fè yon ti valiz ijans ki
gen ladanl tout papye
enpòtan tankou:
flach, papye tè,
elatriye



Pa Mennen
timoun lekòl
Veye timoun yo
pou yo pa sòti al
jwe lè gen siklòn





KISA NOU DWE FÈ LÈ GEN INONDASYON, LÈ LANMÈ MONTE OUBYEN LÈ GEN SOUNAMI ?

1

- Si w pa kapab kite zòn nan, kouri monte sou do kay la oubyen sou yon pye bwa

- Kouri kite zòn ki gen danje a, ale nan mòn.

2

Kouri kite zòn danje a ak yon ti valiz ki gen tout pyès enpòtan w.

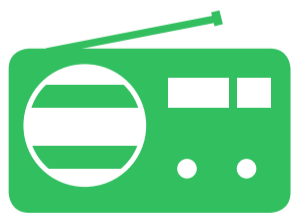
3

Pa ale kote ki inonde ak kote ki konn inonde yo tankou: plaj, bò lanmè, bò larivyè, sou pon, elatriye

4

Toujou tande konsiy otorite lokal yo, brigadye pwoteksyon sivil yo, kwa wouj, eskout, elatriye

Nenpòt jan sa ye, toujou koute konsèy otorite yo...



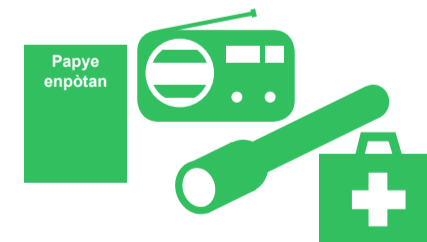
Koute Radyo
Pou nou konnen kijan sityasyon-an ap evolye



Kite zòn ki gen danje-a



Pote kole youn ak lòt
Rele nan telefòn si gen ijans



Fè yon ti valiz ijans ki gen ladanl tout papye enpòtan tankou: flach, papye tè, elatriye



Lè gen lapli pa rete bò lanmè ak bò larivyè





KISA NOU DWE FÈ LÈ GEN DEBOULONNAY TÈ ?

1 Ale nan mòn

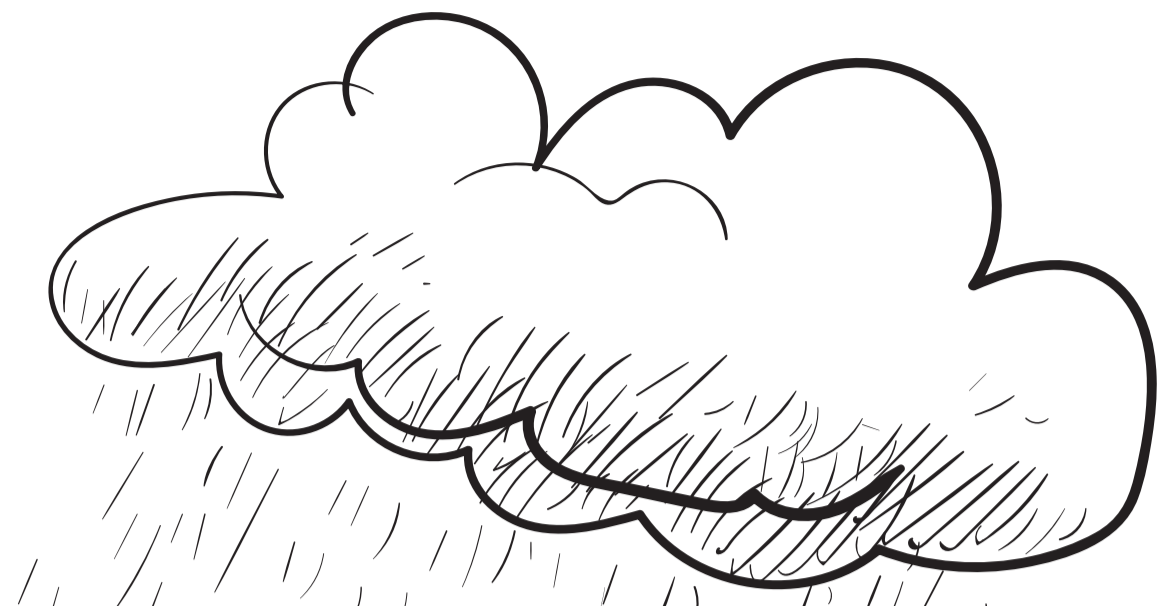


2 Kouri kite zòn ki gen deboulonnay tè -a

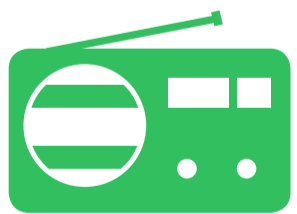


3 Kouri sou kote deboulonnay

4 Lè gen lapli pa alè bò ravin ak bò falèz



Nenpòt jan sa ye, toujou koute konsèy otorite yo...



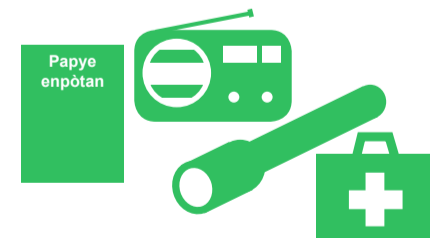
Koute Radyo
Pou nou konnen
kijan sityasyon-an
ap evolye



Kite zòn ki gen
danje-a



Pote kole youn ak lòt
Rele nan telefòn si
gen ijans



Fè yon ti valiz ijans ki
gen ladanl tout papye
enpòtan tankou:
flach, papye tè,
elatriye



Lè gen lapli
pa rete bò
lanmè ak
bò larivyè





KISA NOU DWE FÈ LÈ GEN TRANBLEMANN TÈ ?



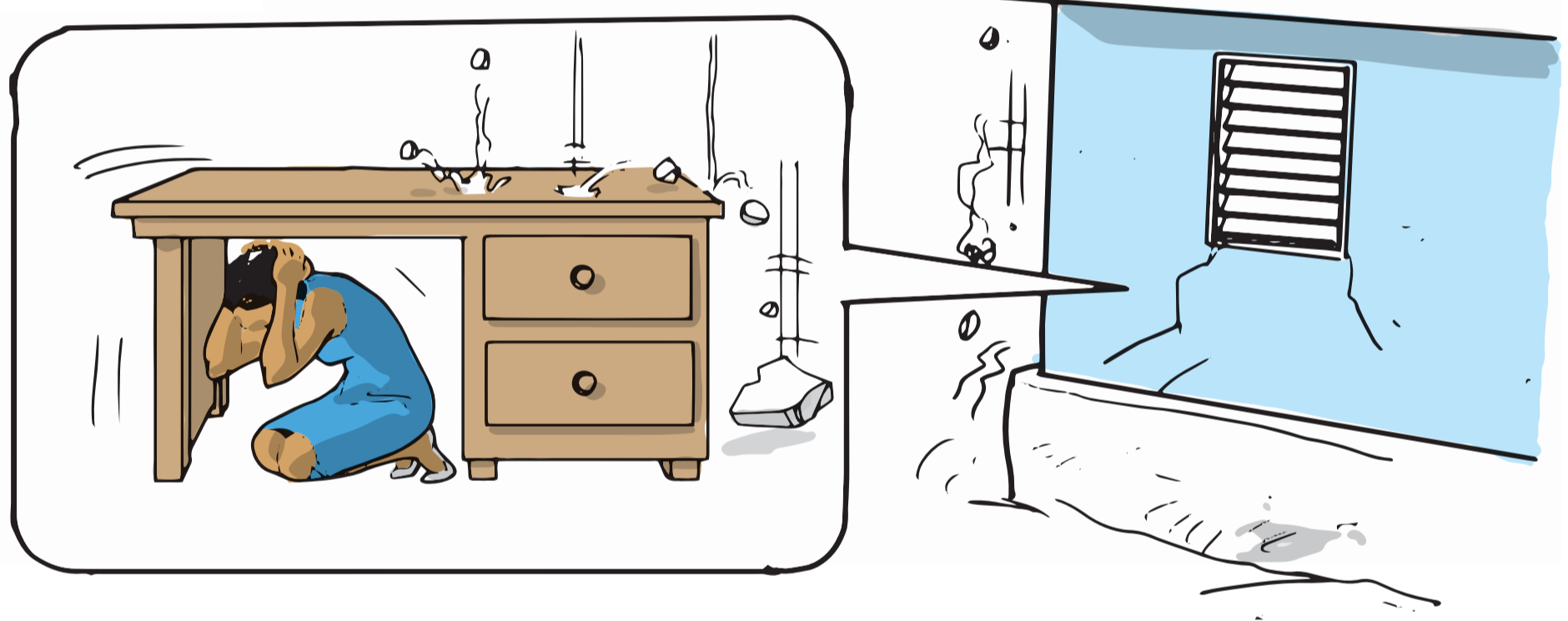
1

Siw pa andedan kay
Pa rete bò lanmè, kouri monte
sou mòn ki pi prèw la



2

Pa rete andedan kay, ni anba
pye bwa, ni anba fil kouran epi
pa monte ni desan eskalye



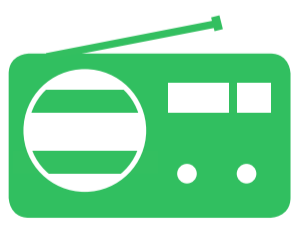
4

Toujou koute konèy manm
pwoteksyon sivil yo

3

Siw andedan kay : antre
anba yon mèb ki djanm
epi pwoteje tèt ou

Nenpòt jan sa ye, toujou koute konsèy otorite yo...



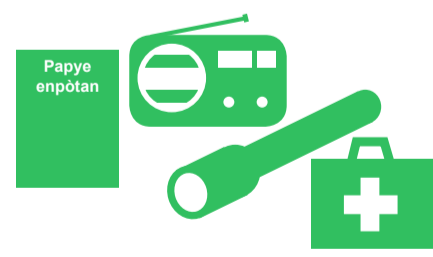
Koute Radyo
Pou nou konnen
kijan sityasyon-an
ap evolye



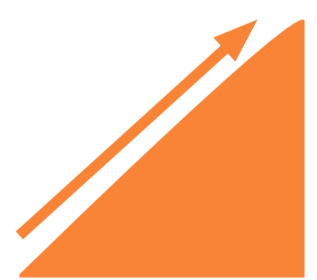
Kite zòn ki gen
danje-a



Pote kole youn ak lòt
Rele nan telefòn si
gen ijans



Fè yon ti valiz ijans ki
gen ladanl tout papye
enpòtan tankou:
flach, papye tè,
elatriye



Pa rete bò
lanmè epi kouri
monte nan mòn
ki pi prèw la

